

NOTES

1. PLANTING COUNTS SHOWN ON LANDSCAPE LEGEND L102 REFLECT THE TOTAL PLANT COUNT OF ALL SHEETS
2. DECORATIVE ROCK MULCH 2.5' FROM BUILDING ALONG THE BUILDING BACK FOR MAINTENANCE STRIP
3. SHRUBS SHOWN ALONG FOUNDATION TO BE FIELD ADJUSTED WITH ON-GRADE PATIOS
4. FINAL DESIGN FOR GARDEN AREAS A & B TO BE DESIGNATED IN THE FIELD
5. STORMWATER POND TO BE SEEDED WITH NATIVE GRASS & FORBE MIX MNDOT # 33-261

LAND MATTERS, LLC
 14901 63RD PLACE
 NORTH
 MAPLE GROVE, MN
 55311
 Phone:
 612-598-5706
 kathyaococonnell@gmail.com

CLIENT

MOGREN

LOCATION

Maplewood
 MN

PROJECT

TRAILS
 EDGE
 OF
 MAPLEWOOD

PRELIMINARY
 LANDSCAPE
 PLANS

CERTIFICATION

I hereby certify that this plan, specification or report was prepared by me or under my direct supervision and that I am a duly Licensed Professional Landscape Architect under the laws of the State of Minnesota.

Kathleen O'Connell Date

License Number 20862

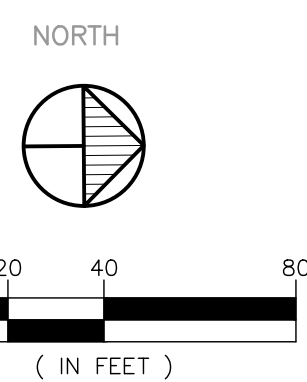
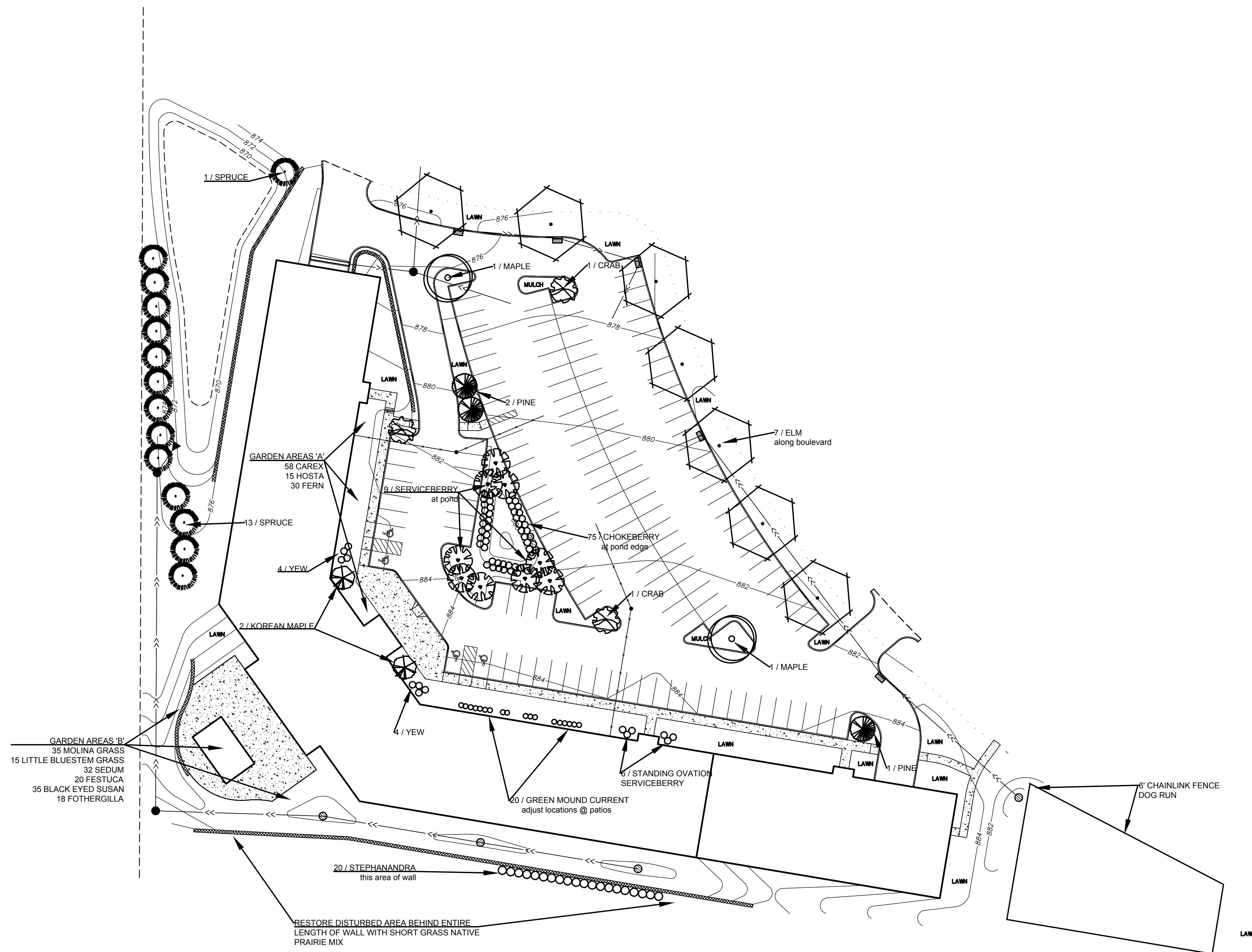
REVISIONS	No.	DATE

DATE	05-18-18
DRAWN BY	XXX
CHECKED BY	XXX
JOB NO.	XXX

PLANTING
 PLAN

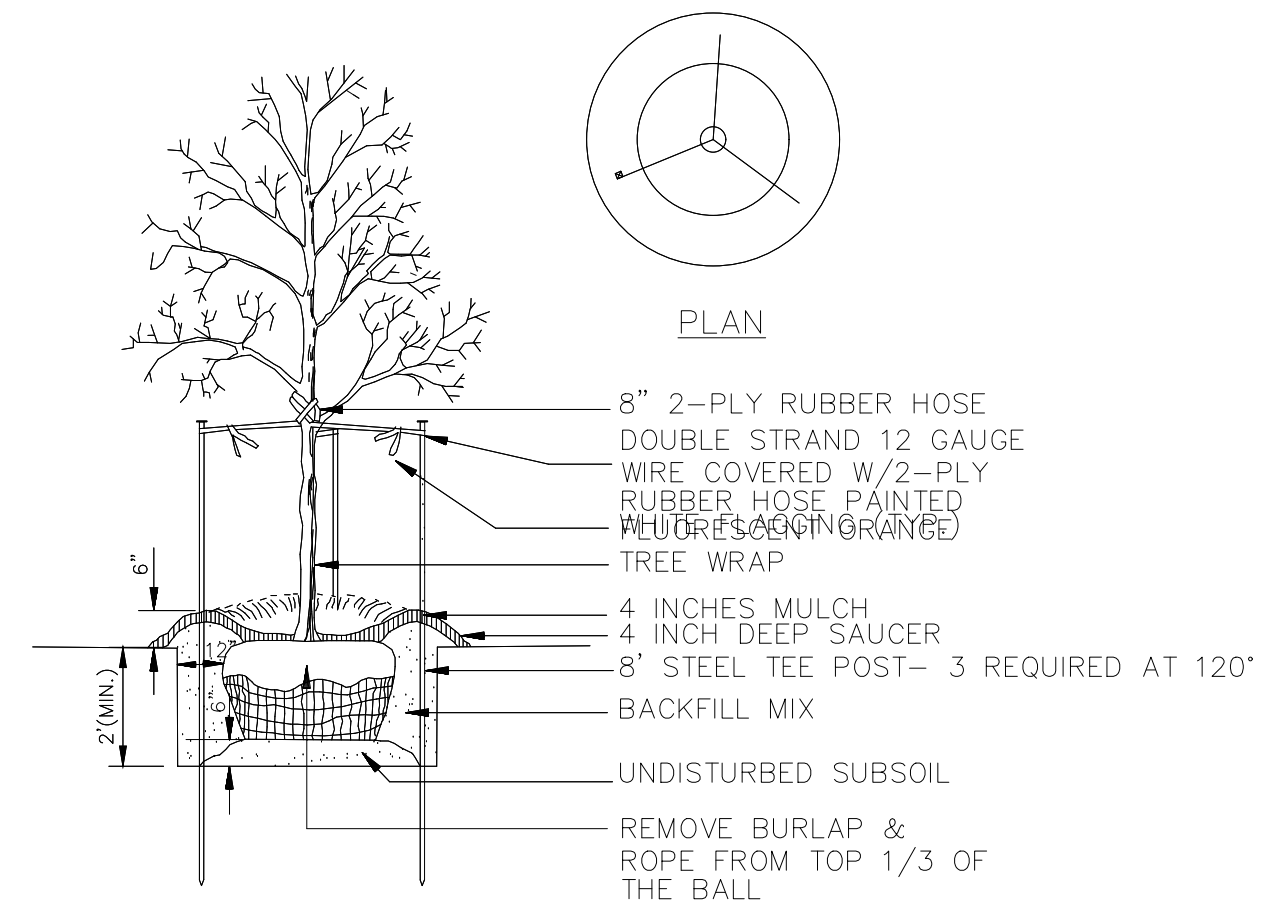
SHEET NUMBER

L101



LANDSCAPE LEGEND

SYMBOL	COMMON NAME / BOTANICAL NAME	SIZE	ROOT	QTY	COMMENTS	SYMBOL	COMMON NAME / BOTANICAL NAME	SIZE	ROOT	QTY	COMMENTS	SYMBOL	COMMON NAME / BOTANICAL NAME	SIZE	ROOT	QTY	COMMENTS
EVERGREEN & CANOPY TREES LAKE SIDE						SHRUBS						PERENNIALS					
	CRABAPPLE 'PINK SPIRES' MALUS 'PINK SPIRES'	1.5"	B&B	3	-		TAUNTON YEW TAXUS X MEDIA 'TAUNTONII'	#2	B&B	8	-		BLACK EYED SUSAN RUDBECKIA 'GOLDSTRUM'	#1	cont.	35	B
	ELM 'PRINCETON' ULMUS AMERICANA 'PRINCETON'	2'	B&B	7	-		FROTHERGILLA FROTHERGILLA 'MOUNT AIRY'	#2	cont.	18	-		CAREX CAREX DOLICHOSTACHYA 'KAGA NISHIKI'	#1	cont.	58	A
	MAPLE 'AUTUMN RADIANCE' ACER RUBRUM 'AUTUMN RADIANCE'	2"	B&B	2	-		IROQUOIS BEAUTY CHOKEBERRY ARONIA MELANOCARPA 'MORTON'	#2	cont.	75	-		FERN DRYOPTERIS ERTHROSORA 'BRILLIANCE'	#1	cont.	30	A
	MAPLE, KOREAN ACER X PSEUDOSIEBOLDIANUM 'NORTH WIND'	#15	CONT	2	-		STEPHANANDRA STEPHANANDRA INGISA 'CRISPA'	#2	cont.	20	-		FESTUCA FESTUCA GLAUCA	#1	cont.	20	B
	SERVICEBERRY AMELANCHIER X GRANDIFLORA	6'HT	B&B	9	MULTI STEM		CURRENT, GREEN MOUND RIBES ALPINUM 'GREEN MOUND'	#5	cont.	20	-		HOSTA HOSTA 'BRESSINGHAM BEAUTY'	#1	cont.	15	A
	PINE, SWISS STONE PINUS CEMBRA 'HERMAN'	#20	CONT	3	-	NOTES 1. PLANTING COUNTS SHOWN ON LANDSCAPE LEGEND REFLECT THE TOTAL PLANT COUNT OF ALL SHEETS							LITTLE BLUESTEM SCHIZACHYRIUM SCOPARIUM 'BLAZE'	#1	B&B	15	B
	BLACK HILLS SPRUCE PICEA GLAUCA DENSATA	6'HT	B&B	14	-								MOLINA SKYRACER GRASS MOLINA ARUNDIACEA 'SKYRACER'	#1	cont.	35	B



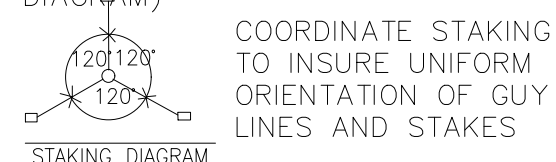
NOTE: SEE PLANTING NOTES FOR THE TYPE OF MULCH MATERIAL TO USE.

1 DECIDUOUS TREE PLANTING DETAIL
L-202 NOT TO SCALE

- SCARIFY BOTTOM AND SIDES OF HOLE PRIOR TO PLANTING
- TRIM OUT DEAD WOOD AND WEAK AND/OR DEFORMED TWIGS. DO NOT CUT A LEADER. DO NOT PAINT CUTS.
- SET PLANT ON UNDISTURBED NATIVE SOIL OR THOROUGHLY COMPACTED BACKFILL SOIL. INSTALL PLANT SO THE ROOT FLARE IS AT OR UP TO 2" ABOVE THE FINISHED GRADE.
- PLACE PLANT IN PLANTING HOLE WITH BURLAP AND WIRE BASKET, (IF USED), INTACT. BACKFILL WITH APPROXIMATELY 12" OF THE TOP OF ROOTBALL, WATER PLANT. REMOVE TOP 1/3 OF THE BASKET OR THE TOP TWO HORIZONTAL RINGS, WHICHEVER IS GREATER. REMOVE ALL BURLAP AND NAILS FROM TOP 1/3 OF THE BALL. REMOVE ALL TWINE.
- PLUMB AND BACKFILL WITH BACKFILL SOIL.
- WATER TO SETTLE PLANTS AND FILL VOIDS.
- WATER WITHIN TWO HOURS OF INSTALLATION. WATERING MUST BE SUFFICIENT TO THOROUGHLY SATURATE ROOT BALL AND PLANTING HOLE.
- PLACE MULCH WITHIN 48 HOURS OF THE SECOND WATERING UNLESS SOIL MOISTURE IS EXCESSIVE.

NOTE: GUY ASSEMBLY OPTIONAL BUT CONTRACTOR ASSUMES FULL RESPONSIBILITY FOR MAINTAINING TREE IN A PLUMB POSITION FOR THE DURATION OF THE GUARANTEE PERIOD

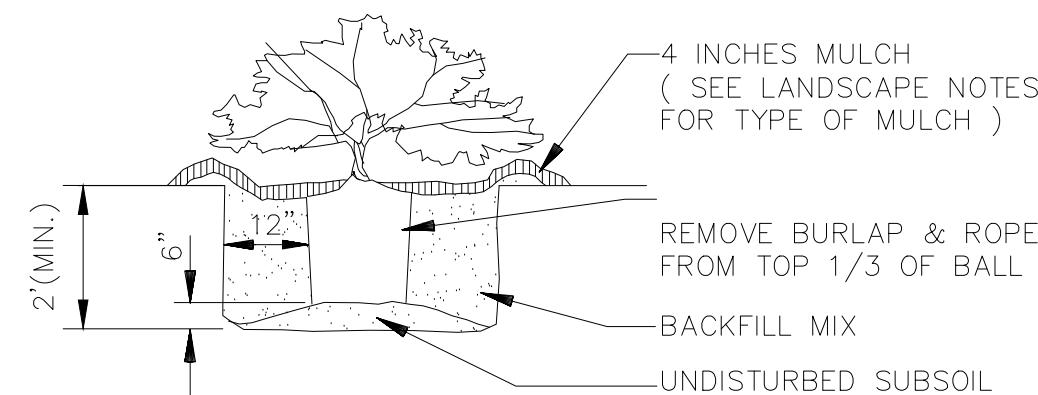
GUY ASSEMBLY- 16" POLYPROPYLENE OR POLYETHYLENE (40 MIL) 1-1/2" WIDE STRAP (TYP) DOUBLE STRAND 10 GA. WIRE, 2-7" ROLLED STEEL POSTS (MnDOT 3401) @ 180° O.C. (SEE STAKING DIAGRAM)



- COORDINATE STAKING TO INSURE UNIFORM ORIENTATION OF GUY LINES AND STAKES
- GUY WIRE WITH WEBBING FLAGGING- ONE PER WIRE
- 4"-6" SHREDDED BARK MULCH
- 2"x2"x24" WOOD STAKE SET AT ANGLE- STAKE TOP BELOW GRADE
- EXISTING GRADE
- MINIMUM 1/2 WIDTH OF ROOT BALL
- PLANTING SOIL MIXTURE (SEE SPEC.)
- UNDISTURBED OR STABILIZED SUBSOILS

2 CONIFEROUS TREE PLANTING DETAIL
L-202 NOT TO SCALE

STAKING DETAILS FOR DECIDUOUS AND CONIFEROUS TREES SHALL APPLY TO CONTAINER STOCK IF NEEDED TO MAINTAIN AN UPRIGHT POSITION. CONTRACTOR ASSUMES FULL RESPONSIBILITY FOR MAINTAINING ALL TREES AND PLANT MATERIALS IN A PLUMB POSITION FOR THE DURATION OF THE GUARANTEE.



4 SHRUB & CONTAINER PLANTING DETAIL
L-202 NOT TO SCALE

PLANTING NOTES

- ALL PLANTS MUST BE HEALTHY, VIGOROUS MATERIAL, FREE OF PESTS AND DISEASE AND BE CONTAINER GROWN OR BALLED AND BURLAPPED AS INDICATED IN THE LANDSCAPE LEGEND.
- ALL TREES MUST BE STRAIGHT TRUNKED AND FULL HEADED AND MEET ALL REQUIREMENTS SPECIFIED.
- THE LANDSCAPE ARCHITECT RESERVES THE RIGHT TO REJECT ANY PLANTS WHICH ARE DEEMED UNSATISFACTORY BEFORE, DURING, OR AFTER INSTALLATION.
- NO SUBSTITUTIONS OF PLANT MATERIAL SHALL BE ACCEPTED UNLESS APPROVED IN WRITING BY THE LANDSCAPE ARCHITECT.
- ALL PLANTING STOCK SHALL CONFORM TO THE "AMERICAN STANDARD FOR NURSERY STOCK," ANSI-Z60, LATEST EDITION, OF THE AMERICAN ASSOCIATION OF NURSERYMEN, INC. AND SHALL CONSTITUTE MINIMUM QUALITY REQUIREMENTS FOR PLANT MATERIALS.
- EXISTING TREES AND SHRUBS TO REMAIN SHALL BE PROTECTED TO THE DRIP LINE FROM ALL CONSTRUCTION TRAFFIC, STORAGE OF MATERIALS ETC. WITH 4' HT. ORANGE PLASTIC SAFETY FENCING ADEQUATELY SUPPORTED BY STEEL FENCE POSTS 6' O.C. MAXIMUM SPACING.
- ALL PLANT MATERIAL QUANTITIES, SHAPES OF BEDS AND LOCATIONS SHOWN ARE APPROXIMATE. CONTRACTOR SHALL BE RESPONSIBLE FOR COMPLETE COVERAGE OF ALL PLANTING BEDS AT SPACING SHOWN AND ADJUSTED TO CONFORM TO THE EXACT CONDITIONS OF THE SITE. THE LANDSCAPE ARCHITECT SHALL APPROVE THE STAKING LOCATION OF ALL PLANT MATERIALS PRIOR TO INSTALLATION.
- ALL TREES MUST BE PLANTED, MULCHED, AND STAKED AS SHOWN IN THE DETAILS.
- ALL PLANTING AREAS MUST BE COMPLETELY MULCHED AS SPECIFIED.
- MULCH: SHREDDED HARDWOOD MULCH, CLEAN AND FREE OF NOXIOUS WEEDS OR OTHER DELETERIOUS MATERIAL, IN ALL MASS PLANTING BEDS AND FOR TREES, UNLESS INDICATED AS ROCK MULCH ON DRAWINGS. SUBMIT SAMPLE TO LANDSCAPE ARCHITECT PRIOR TO DELIVERY ON-SITE FOR APPROVAL. DELIVER MULCH ON DAY OF INSTALLATION. USE 4" FOR TREES, SHRUB BEDS, AND 3" FOR PERENNIAL/GROUND COVER BEDS, UNLESS OTHERWISE DIRECTED.
- THE PLAN TAKES PRECEDENCE OVER THE LANDSCAPE LEGEND IF DISCREPANCIES EXIST. THE SPECIFICATIONS TAKE PRECEDENCE OVER THE PLANTING NOTES AND GENERAL NOTES.
- THE CONTRACTOR SHALL BE RESPONSIBLE FOR ALL MULCHES AND PLANTING SOIL QUANTITIES TO COMPLETE THE WORK SHOWN ON THE PLAN. VERIFY ALL QUANTITIES SHOWN ON THE LANDSCAPE LEGEND.
- LONG-TERM STORAGE OF MATERIALS OR SUPPLIES ON-SITE WILL NOT BE ALLOWED.
- THE CONTRACTOR SHALL KEEP PAVEMENTS, PLANTERS AND BUILDINGS CLEAN AND UNSTAINED. ALL PEDESTRIAN AND VEHICLE ACCESS TO BE MAINTAINED THROUGHOUT CONSTRUCTION PERIOD. ALL WASTES SHALL BE PROMPTLY REMOVED FROM THE SITE. ANY PLANT STOCK NOT PLANTED ON DAY OF DELIVERY SHALL BE HEeled IN AND WATERED UNTIL INSTALLATION. PLANTS NOT MAINTAINED IN THIS MANNER WILL BE REJECTED. ANY DAMAGE TO EXISTING FACILITIES SHALL BE REPAVED AT THE CONTRACTOR'S EXPENSE.
- THE CONTRACTOR SHALL BE RESPONSIBLE FOR COMPLYING WITH ALL APPLICABLE CODES, REGULATIONS, AND PERMITS GOVERNING THE WORK.
- LOCATE AND VERIFY ALL UTILITIES, INCLUDING IRRIGATION LINES, WITH THE OWNER FOR PROPRIETARY UTILITIES AND GOPHER STATE ONE CALL AT 454-0002 (TWIN CITIES METRO AREA) OR 800-252-1166 (GREATER MINNESOTA) 48 HOURS BEFORE DIGGING. CONTRACTOR SHALL BE RESPONSIBLE FOR THE PROTECTION AND REPAIR OF ANY DAMAGES TO SAME. NOTIFY THE LANDSCAPE ARCHITECT OF ANY CONFLICTS TO FACILITATE PLANT RELOCATION.
- USE ANTI-DESICCANT (WILT-PRUF OR APPROVED EQUAL) ON DECIDUOUS PLANTS MOVED IN LEAF AND FOR EVERGREENS MOVED ANYTIME. APPLY AS PER MANUFACTURER'S INSTRUCTION. ALL EVERGREENS SHALL BE SPRAYED IN THE LATE FALL FOR WINTER PROTECTION DURING WARRANTY PERIOD.
- PLANTING SOIL FOR TREES, SHRUBS AND GROUND COVERS: FERTILE FRIABLE LOAM CONTAINING A LIBERAL AMOUNT OF HUMUS AND CAPABLE OF SUSTAINING VIGOROUS PLANT GROWTH. IT SHALL COMPLY WITH MNDOT SPECIFICATION 3877 TYPE B SELECT TOPSOIL. MIXTURE SHALL BE FREE FROM HARDPACK SUBSOIL, STONES, CHEMICALS, NOXIOUS WEEDS, ETC. SOIL MIXTURE SHALL HAVE A PH BETWEEN 6.1 AND 7.5 AND 10-10-10 FERTILIZER AT THE RATE OF 3 POUNDS PER CUBIC YARD. IN PLANTING BEDS INCORPORATE THIS MIXTURE THROUGHOUT THE ENTIRE BED BY ROTOTILLING INTO THE TOP 12" OF SOIL.
- ALL PLANTS SHALL BE GUARANTEED FOR ONE COMPLETE GROWING SEASON (APRIL 1 - NOVEMBER 1), UNLESS OTHERWISE SPECIFIED. THE GUARANTEE SHALL COVER THE FULL COST OF REPLACEMENT INCLUDING LABOR AND PLANTS.
- CONTRACTOR SHALL NOTIFY THE LANDSCAPE ARCHITECT AT LEAST 3 DAYS PRIOR TO PLANNED DELIVERY. THE CONTRACTOR SHALL NOTIFY THE LANDSCAPE ARCHITECT AT LEAST 24 HOURS IN ADVANCE OF BEGINNING PLANT INSTALLATION.
- SEASONS/TIME OF PLANTING: NOTE: THE CONTRACTOR MAY ELECT TO PLANT IN OFF-SEASONS ENTIRELY AT HIS/HER RISK.
 - DECIDUOUS POTTED PLANTS: APRIL 1-JUNE 1; AUG. 21-NOV. 1
 - DECIDUOUS B&B: APRIL 1-JUNE 1; AUG. 21-NOV. 1
 - EVERGREEN POTTED PLANTS: APRIL 1-JUNE 1; AUG. 21-OCT. 1
 - EVERGREEN B&B: APRIL 1-MAY 15; AUG. 21-SEPT. 15
- MAINTENANCE SHALL BEGIN IMMEDIATELY AFTER EACH PORTION OF THE WORK IS IN PLACE. PLANT MATERIAL SHALL BE PROTECTED AND MAINTAINED UNTIL THE INSTALLATION OF THE PLANTS IS COMPLETE. INSPECTION HAS BEEN MADE, AND PLANTINGS ARE ACCEPTED EXCLUSIVE OF THE GUARANTEE. MAINTENANCE SHALL INCLUDE WATERING, CULTIVATING, MULCHING, REMOVAL OF DEAD MATERIALS, RE-SETTING PLANTS TO PROPER GRADE AND KEEPING PLANTS IN A PLUMB POSITION. AFTER ACCEPTANCE, THE OWNER SHALL ASSUME MAINTENANCE RESPONSIBILITIES. HOWEVER, THE CONTRACTOR SHALL CONTINUE TO BE RESPONSIBLE FOR KEEPING THE TREES PLUMB THROUGHOUT THE GUARANTEE PERIOD.
- ANY PLANT MATERIAL WHICH DIES, TURNS BROWN, OR DEFOLIATES (PRIOR TO TOTAL ACCEPTANCE OF THE WORK) SHALL BE PROMPTLY REMOVED FROM THE SITE AND REPLACED WITH MATERIAL OF THE SAME SPECIES, QUANTITY, AND SIZE AND MEETING ALL LANDSCAPE LEGEND SPECIFICATIONS.
- WATERING: MAINTAIN A WATERING SCHEDULE WHICH WILL THOROUGHLY WATER ALL PLANTS ONCE A WEEK. IN EXTREMELY HOT, DRY WEATHER, WATER MORE OFTEN AS REQUIRED BY INDICATIONS OF HEAT STRESS SUCH AS WILTING LEAVES. CHECK MOISTURE UNDER MULCH PRIOR TO WATERING TO DETERMINE NEED. CONTRACTOR SHALL MAKE THE NECESSARY ARRANGEMENTS FOR WATER.
- CONTRACTOR SHALL REQUEST IN WRITING, A FINAL ACCEPTANCE INSPECTION.
- ALL DISTURBED AREAS TO BE SEEDED, ARE TO RECEIVE 4" TOP SOIL, SEED, MULCH, AND WATER UNTIL A HEALTHY STAND OF GRASS IS OBTAINED.

14901 63RD PLACE
NORTH
MAPLE GROVE, MN
55311
Phone:
612-598-5706
kathya@connett@gmail.com

CLIENT
MOGREN

LOCATION
Maplewood
MN

PROJECT
TRAILS
EDGE
OF
MAPLEWOOD

PRELIMINARY
LANDSCAPE
PLANS

CERTIFICATION
I hereby certify that this plan, specification or report was prepared by me or under my direct supervision and that I am a duly licensed Professional Landscape Architect under the laws of the State of Minnesota.

Kathleen D'Connell Date

License Number 20862

REVISIONS	No.	DATE

DATE 05-18-18
DRAWN BY XXX
CHECKED BY XXX
JOB NO. XXX

PLANTING
SCHEDULE

SHEET NUMBER
L102