

Click image to open Product Page

Label	CalcType	Units	Avg	Max	Min	Avg/Min	Max/Min
CALCS @ 4' AFG-15' X 15'	Illuminance	Fc	5.80	61.8	0.0	N.A.	N.A.
FRONT LINE DISPLAY	Illuminance	Fc	49.36	56.5	35.3	1.40	1.60
PERIMETER ROW	Illuminance	Fc	19.64	34.6	2.7	7.27	12.81
SECONDARY DISPLAY	Illuminance	Fc	18.03	25.6	10.9	1.65	2.35

Symbol	Qty	Label	Arrangement	Description	LLF	Lumens/Lamp	Arr. Lum. Lumens	Arr. Watts
+	8	A	D180° 2RTD	SLM-LED-42L-SIL-FTA-50-70CRI-D180RT-26' MH	1.000	N.A.	87620	786.8
■	15	B	D180°	SLM-LED-42L-SIL-5W-50-70CRI-D180-26' MH	1.000	N.A.	81442	786.8
■	13	C	SINGLE	SLM-LED-42L-SIL-FT-50-70CRI-SINGLE-26' MH	1.000	N.A.	43031	393.4
■	5	C15	SINGLE	SLM-LED-42L-SIL-FT-50-70CRI-SINGLE-15' MH	1.000	N.A.	43031	393.4
■	2	W	SINGLE	XWM-FT-LED-08-50-WALL MOUNT @ 15'	1.000	N.A.	8654	76

Based on the information provided, all dimensions and luminaire locations shown represent recommended positions. The engineer and/or architect must determine the applicability of the layout to existing or future field conditions.

This lighting plan represents illumination levels calculated from laboratory data taken under controlled conditions in accordance with The Illuminating Engineering Society (IES) approved methods. Actual performance of any manufacturer's luminaires may vary due to changes in electrical voltage, tolerance in lamps/LED's and other variable field conditions. Calculations do not include obstructions such as buildings, curbs, landscaping, or any other architectural elements unless noted. Fixture nomenclature noted does not include mounting hardware or poles. This drawing is for photometric evaluation purposes only and should not be used as a construction document or as a final document for ordering product.

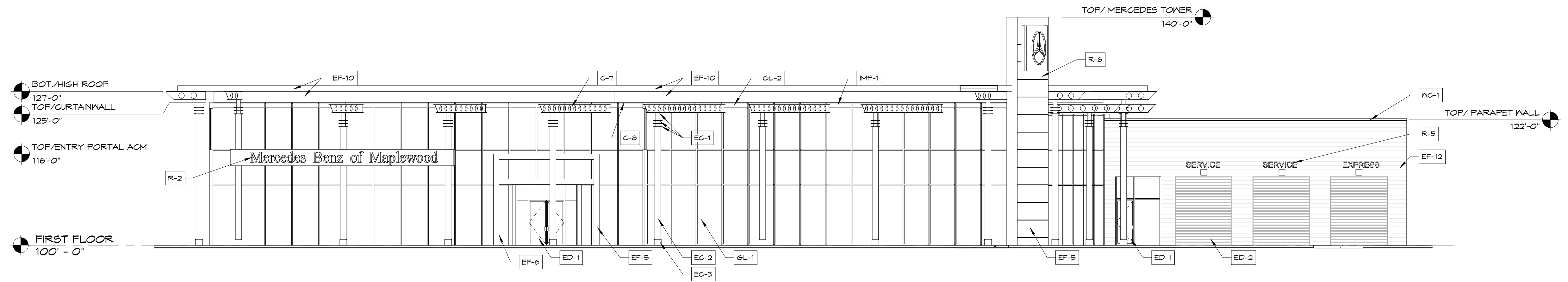
Total Project Watts
Total Watts = 25329.62

LIGHTING PROPOSAL LD-142606-1
MORRIS MERCEDES
MAPLEWOOD, MN

BY: SMB DATE: 5/2/18 REV: 8/7/18 SHEET 1 OF 1
SCALE: 1"=50' 0 50

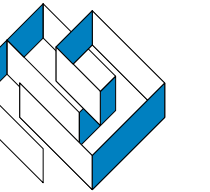
Z:\2017\17-064 Morris-Mercedes-Benz-Maplewood MN\17-064_Morris-MB-Maplewood MN.rvt

5/8/2018 9:19:39 AM



1 WEST ELEVATION
A-4.1 3/32" = 1'-0"

KEY NOTE	MATERIAL SUMMARY	KEY NOTE	MATERIAL SUMMARY	KEY NOTE	MATERIAL SUMMARY	KEY NOTE	MATERIAL SUMMARY	KEY NOTE	MATERIAL SUMMARY
PC-1	<p>12" PRECAST AND EIFS TEXTURED FINISH:</p> <p>MANUFACTURER: WELLS OR EQUAL</p> <p>STYLE: FINISH TYPE, LIMESTONE</p> <p>COLOR: MATCH BENJAMIN MOORE PAINT COLOR, CC-21, "WINTER WHITE" OR SHERVIN WILLIAMS PAINT COLOR, SW1063 "NEBULOUS WHITE"</p> <p>LOCATION: EXTERIOR WALLS, REFER TO ELEVATIONS & PLANS</p>	EF-10	<p>ALUMINUM COMPOSITE PANEL (RAIN-SCREEN, DRY JOINT, SYSTEM):</p> <p>MANUFACTURER: -APOLIC</p> <p>STYLE: 4MM THICK BONDED METAL PANEL WITH NON RADIUS 90 DEGREE BEND. METALLIC PANELS TO HAVE KYNAR ALUMINUM CLEAR COAT FINISH (MAX. SHEET SIZE 48"x122")</p> <p>JOINTS: BUTT PANEL JOINTS W/ ALUM. FLASHING BACKER FIN. TO MATCH PANEL COLOR.</p> <p>COLOR: #A3001-DXLE "SILVER METALLIC"</p> <p>LOCATION: THIN ROOF EDGE SYSTEM & MAIN ENTRY CANOPY ACM, REFER TO WALL SECTIONS.</p>	C-7	<p>STEEL STRUCTURE- PAINT:</p> <p>MFR: MATTHEWS PAINT</p> <p>COLOR: RMP 10249, LRV 15.3, "DARK PEXTER METALLIC"</p> <p>NOTE: - PREPARE ALL EXISTING SURFACES TO RECEIVE PAINT PER MFR. RECOMMENDATIONS</p>	ED-4	<p>OVERHEAD DOOR INSUL- PREFINISHED:</p> <p>MANUFACTURER: OVERHEAD DOOR COMPANY OR EQUAL</p> <p>STYLE: REFER TO DOOR SCHEDULE & ELEVATIONS</p> <p>PAIN COLOR: WHITE</p>	R-2	<p>BUILDING EXTERIOR SIGNAGE:</p> <p>MANUFACTURER: ARCHITECTURAL GRAPHICS, INC. (AGI)</p> <p>STYLE: (1) 422-24-24; 2'-8 3/8" x 20'-3 1/4" L.E.D. ILLUMINATED COLUMN-MOUNTED DEALER NAME PANEL WITH 24" WHITE PRISMATIC CHANNEL LETTERS READING "MERCEDES-BENZ OF ROCHESTER".</p> <p>MOUNTING TUBES: (1) SET OF HORIZONTAL MOUNTING TUBES TO ATTACH R22-24 TO VERTICAL AUTOHAUS COLUMNS.</p> <p>POWER REQUIREMENTS: (1) DEDICATED 20-AMP CIRCUIT @ 120 VAC FOR PROPER ILLUMINATION.</p>
PC-2	<p>12" PRECAST AND EIFS TEXTURED FINISH:</p> <p>MANUFACTURER: WELLS OR EQUAL</p> <p>STYLE: FINISH TYPE, LIMESTONE</p> <p>COLOR: MATCH BENJAMIN MOORE PAINT COLOR, 1605, "WINTER SOLSTICE" OR SHERVIN WILLIAMS PAINT COLOR, SW1072 "ONLINE"</p> <p>LOCATION: EXTERIOR WALLS, REFER TO ELEVATIONS & PLANS</p>	EF-12	<p>GALVANIZED SIDING:</p> <p>MANUFACTURER: -CENTRIA</p> <p>STYLE: 20 GA. COATED GALVANIZED STEEL, CONCEPT SERIES CS-260, HORIZONTAL</p> <p>JOINTS: CONCEALED FASTENERS, WITH JOINT CONDITION PER MFR. STD.</p> <p>COLOR: AS SELECTED FROM 9984 "PLATINUM", OR 9946 "SILVERSMITH"</p> <p>LOCATION: EXTERIOR BUILDING WALL PANEL & "BAND" (MUST BE INSTALLED OVER ICE & WATER SHIELD WALL COVER)</p>	C-8	<p>METALLIC PAINT- STEEL ROOF DECKING:</p> <p>MANUFACTURER: VARIOUS</p> <p>PAINT: DRY-FALL, IF POSSIBLE</p> <p>COLOR: SILVER/ALUMINUM FINISH</p> <p>LOCATION: EXPOSED OVERHEAD STEEL ROOF DECKING</p>	GL-1	<p>EXTERIOR INSULATED GLAZING:</p> <p>STYLE: 1" DOUBLE GLAZED, TEMPERED, CLEAR, LOW-E GLASS, (PPG SOLARBAN 70XL (2) SOLEXIA + CLEAR), TYP.</p> <p>FRAME COLOR: CLEAR ANODIZED ALUMINUM</p> <p>LOCATION: EXTERIOR CURTAINWALL, WINDOWS/STORE-FRONT FRAMING), & DOORS, REFER TO ELEVATIONS, PLANS, & DOOR SCHED. FOR LOCATIONS & INFO.</p>	R-5	<p>BUILDING EXTERIOR SIGNAGE:</p> <p>MANUFACTURER: ARCHITECTURAL GRAPHICS, INC. (AGI)</p> <p>STYLE: (1) 10" HIGH, L.E.D. ILLUMINATED, READING "SERVICE", T CHARACTER.</p> <p>POWER REQUIREMENTS: (1) DEDICATED 20-AMP CIRCUIT @ 120 VAC FOR PROPER ILLUMINATION.</p>
PC-3	<p>12" PRECAST AND EIFS TEXTURED FINISH:</p> <p>MANUFACTURER: WELLS OR EQUAL</p> <p>STYLE: FINISH TYPE, LIMESTONE</p> <p>COLOR: MATCH BENJAMIN MOORE PAINT COLOR, 1604 SILVERY MOON</p> <p>LOCATION: EXTERIOR WALLS, REFER TO ELEVATIONS & PLANS</p>	EC-1	<p>EXTERIOR COLUMN PAINT:</p> <p>MANUFACTURER: MATTHEWS PAINT</p> <p>PAINT: MP 44784, SATIN, LOW V.O.C.</p> <p>COLOR: SILVER METALLIC</p> <p>LOCATION: EXTERIOR TUBULAR STEEL COLUMNS- CAPITAL TUBE, TOP PLATE, & TRIPLE RINGS (ALL EXPOSED SURFACES)</p>	ED-1	<p>ALUMINUM FRAME EXTERIOR DOOR SYSTEM:</p> <p>MANUFACTURER: KAWNEER OR EQUAL</p> <p>STYLE: REFER TO DOOR SCHEDULE</p> <p>FRAME COLOR: CLEAR ANODIZED ALUMINUM</p> <p>GLAZING: 1" THK. INSUL. GLAZING UNITS, PPG SOLARBAN 70XL, CLEAR, OR EQUAL, REFER TO DOOR SCHEDULE.</p> <p>LOCATION: EXTERIOR ALUM. DOORS & OVERHEAD DOORS, REFER TO PLANS & DOOR SCHEDULE FOR ADD'L. INFO.</p>	GL-2	<p>EXTERIOR INSULATED GLAZING (SPANDREL):</p> <p>STYLE: 1" DOUBLE GLAZED, TEMPERED, CLEAR, LOW-E GLASS, (PPG SOLARBAN 70XL (2) SOLEXIA + CLEAR), TYP.</p> <p>SPANDREL COLOR: AS SELECTED FROM MFR. STD. COLORS.</p> <p>FRAME COLOR: CLEAR ANODIZED ALUMINUM</p> <p>LOCATION: EXTERIOR CURTAINWALL, WINDOWS/STORE-FRONT FRAMING), & DOORS, REFER TO ELEVATIONS, PLANS, & DOOR SCHED. FOR LOCATIONS & INFO.</p>	R-6	<p>BUILDING EXTERIOR SIGNAGE:</p> <p>MANUFACTURER: ARCHITECTURAL GRAPHICS, INC. (AGI)</p> <p>STYLE: (1) 7-1 9/16" x 6-5 9/16" ILLUMINATED WALL-MOUNTED STAR ELEMENT, WEIGHING 450 LBS.</p> <p>POWER REQUIREMENTS: (1) DEDICATED 20-AMP CIRCUIT @ 120 VAC FOR PROPER ILLUMINATION.</p>
EF-5	<p>ALUMINUM COMPOSITE PANEL (RAIN-SCREEN, DRY JOINT, SYSTEM):</p> <p>MANUFACTURER: -APOLIC</p> <p>STYLE: 4MM THICK BONDED METAL PANEL WITH NON RADIUS 90 DEGREE BEND. METALLIC PANELS TO HAVE KYNAR ALUMINUM CLEAR COAT FINISH (MAX. SHEET SIZE 48"x122")</p> <p>JOINTS: BUTT PANEL JOINTS W/ ALUM. FLASHING BACKER FIN. TO MATCH PANEL COLOR.</p> <p>COLOR: BLX BLACK 443-BLX-30</p> <p>LOCATION: BLADE WALL AND ENTRY PORTAL</p>	EC-2	<p>EXTERIOR COLUMN PAINT:</p> <p>MANUFACTURER: MATTHEWS PAINT</p> <p>PAINT: MP, SVOC 923</p> <p>COLOR: BLACK 60%</p> <p>LOCATION: EXTERIOR TUBULAR STEEL COLUMNS- MAIN BODY TUBE & BASE PLATE</p>	ED-2	<p>OVERHEAD DOOR INSUL. HIGH-SPEED, IV GLAZING:</p> <p>MANUFACTURER: REFER TO SPEC., (BASIS OF DESIGN RYTEC)</p> <p>STYLE: ALUMINUM W/ INSUL. GLAZING, (RYTEC- SPIRAL FV)</p> <p>GLAZING: INSUL., CLEAR</p> <p>FINISH/COLOR: CLEAR ANODIZED</p>	KC-1	<p>METAL WALL COPING:</p> <p>MANUFACTURER: FIRESTONE, UNA-GLAD</p> <p>COLOR: SILVER METALLIC</p> <p>LOCATION: WALL COPING, REFER TO PLANS & WALL SECTIONS, TYP.</p>	R-7	<p>BUILDING EXTERIOR SIGNAGE:</p> <p>MANUFACTURER: ARCHITECTURAL GRAPHICS, INC. (AGI)</p> <p>STYLE: (1) 7-1 9/16" x 6-5 9/16" ILLUMINATED WALL-MOUNTED STAR ELEMENT, WEIGHING 450 LBS.</p> <p>POWER REQUIREMENTS: (1) DEDICATED 20-AMP CIRCUIT @ 120 VAC FOR PROPER ILLUMINATION.</p>
EF-6	<p>ALUMINUM COMPOSITE PANEL (RAIN-SCREEN, DRY JOINT, SYSTEM):</p> <p>MANUFACTURER: -APOLIC</p> <p>STYLE: 4MM THICK BONDED METAL PANEL WITH NON RADIUS 90 DEGREE BEND. METALLIC PANELS TO HAVE KYNAR ALUMINUM CLEAR COAT FINISH (MAX. SHEET SIZE 48"x122")</p> <p>JOINTS: BUTT PANEL JOINTS W/ ALUM. FLASHING BACKER FIN. TO MATCH PANEL COLOR.</p> <p>COLOR: RVN WHITE 4-RVN-645</p> <p>LOCATION: INTERIOR VERTICAL AND HORIZONTAL FACE OF ENTRANCE PORTAL</p>	EC-3	<p>EXTERIOR COLUMN BASE COLLAR:</p> <p>MANUFACTURER: AGI</p> <p>MATERIAL: 10 GA., 316 STAINLESS STEEL</p> <p>FINISH: HORIZONTALLY BRUSHED STAINLESS STEEL</p> <p>LOCATION: EXTERIOR TUBULAR STEEL COLUMNS- 2-PIECE CUSTOM BASE COLLAR WITH CONCEALED INTERLOCKING HARDWARE</p>	ED-3	<p>STEEL DOOR PAINT:</p> <p>MANUFACTURER: MATTHEWS PAINT</p> <p>PAINT: MP 10145, LRV 21.4</p> <p>COLOR: METALLIC GRAY</p> <p>LOCATION: STEEL OVERHEAD DOOR & HOLLOW METAL DOOR FRAMES, REFER TO DOOR SCHEDULE</p>	MP-1	<p>INSULATED METAL PANEL INFILL (CURTAINWALL):</p> <p>MANUFACTURER: KAWNEER OR EQUAL</p> <p>STYLE: 1" THK. INSULATED MTL. PANEL, FINISH BOTH SIDES</p> <p>FINISH COLOR: CLEAR ANODIZED ALUMINUM</p> <p>LOCATION: INFILL PANELS @ CURTAINWALL SYSTEM, REFER TO EXT. ELEV.</p>		



©Copyright. This Print Computer File Is The Exclusive Property Of Gries Architectural Group, Inc. Use Only For Purpose Which Licensed. Copying Or Reproducing Is Prohibited. Return Upon Request.

A BUILDING RENOVATION FOR:
MORRIES- MERCEDES-BENZ
MINNESOTA
MAPLEWOOD,

date: 05/08/2018

job: 17-064

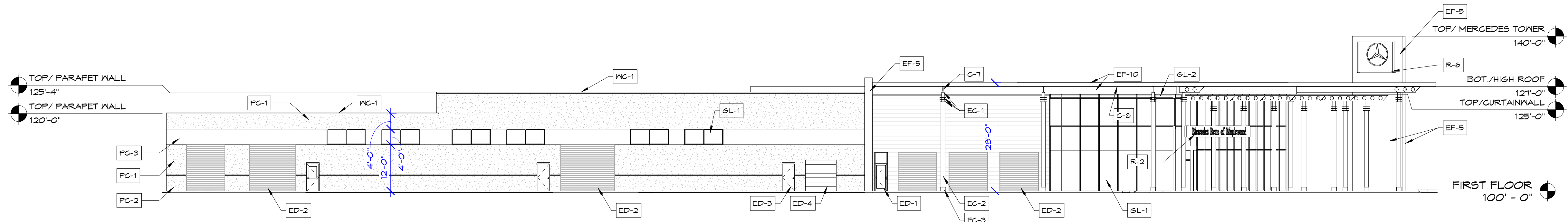
d. by: BJS

rev.:

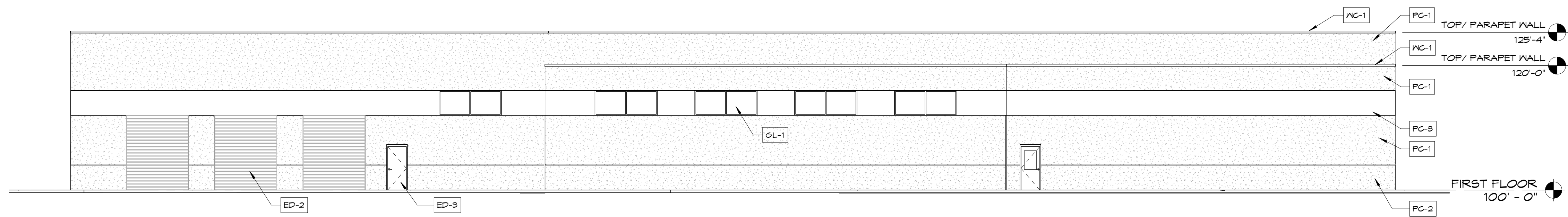
A-4.1

Z:\2017\17-064 Morris-Mercedes-Benz-Maplewood MN\17-064_Morris-MB-Maplewood MN.rvt

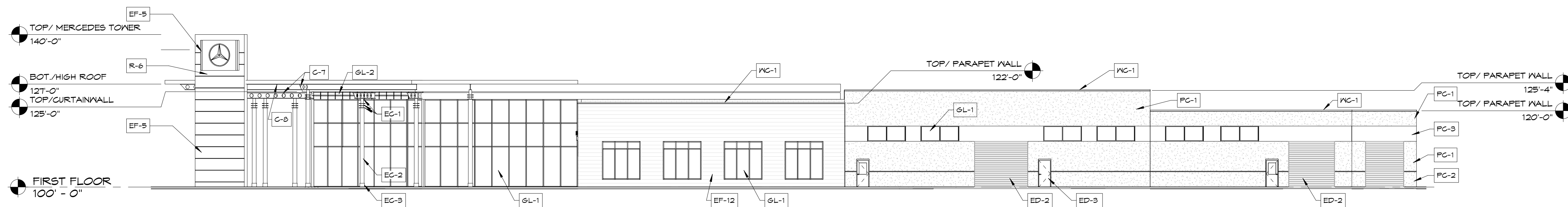
5/8/2018 9:16:03 AM



1 NORTH ELEVATION
A-4.2 1/16" = 1'-0"



2 EAST ELEVATION
A-4.2 3/32" = 1'-0"



3 SOUTH ELEVATION
A-4.2 1/16" = 1'-0"

A BUILDING RENOVATION FOR:
MORRIES-MERCEDES-BENZ
 MAPLEWOOD, MINNESOTA

date: 05/08/2018
 job: 17-064
 d. by: BJS
 rev.:

A-4.2