

Living In And Caring For The Greenway

Living in a Maplewood Natural Area Greenway does not impose any special requirements or restrictions on residents. But many greenway residents were drawn here by the natural landscape and are working to preserve its ecological integrity.

Stewardship is essential for the long-term protection of the greenways. Without care, most of our natural areas will degrade due to pollutants, invasive species, altered hydrology, and removal of natural forces such as fire. Whether you live in a greenway or are visiting, everyone can play a role in keeping the greenways functioning.

Learn and Explore

- Hike the public lands in a greenway to learn more about your larger “backyard.”
- Visit Maplewood Nature Center to tour their sustainable landscape.
- Attend a Maplewood Nature Center class on ecology or stewardship.
- Volunteer for one of Maplewood’s natural resources monitoring programs.



Support and Services for Residents

- Participate in watershed district cost-share programs that provide small grants to support activities such as planting native plants, installing rain gardens and rain barrels, and restoring shorelines and wetland buffers.
- Take advantage of city programs such as curb-side buckthorn pickup.
- For ideas on how to get started, contact Maplewood Nature Center or visit their website at www.ci.maplewood.mn.us/nc.

Do a Stewardship Project

- Consider transitioning a portion to wildlife habitat. Butterfly gardens, shrub gardens, trees, or planted nature areas can all provide food and shelter for insects, birds, and wildlife.
- Plant a rain garden to capture runoff from your rooftop or driveway.
- Remove invasive species, such as buckthorn, in your yard.
- Sign up at the Maplewood Nature Center to volunteer for a restoration project at a preserve.
- Get together with neighbors to tackle a neighborhood stewardship project.
- If you own several acres of land, consider preserving your land permanently.

Maplewood’s Natural Area Greenways



Welcome to Maplewood’s four Natural Area Greenways!

Greenways are corridors of natural land that provide wildlife habitat. Each Maplewood Natural Area Greenway is a patchwork of public and private lands, where smaller individual plots of habitat are linked into a greater whole. In a sense, the greenways are a bird’s eye view of habitat. Public lands in the greenway are open to public use. Private parcels are not open to the public, but they play a critical role in providing backyard natural areas that increase habitat in the greenway.



Mapping the Greenways

In 2008, Maplewood hired Applied Ecological Services to map the largest contiguous areas of habitat remaining in Maplewood. These became our Natural Area Greenways. They are a snapshot in time. The greenway boundaries will shift. Some private lands in the greenways will likely be developed. In other areas, residents will “Grow the Greenway” by transitioning portions of manicured yards to natural vegetation.

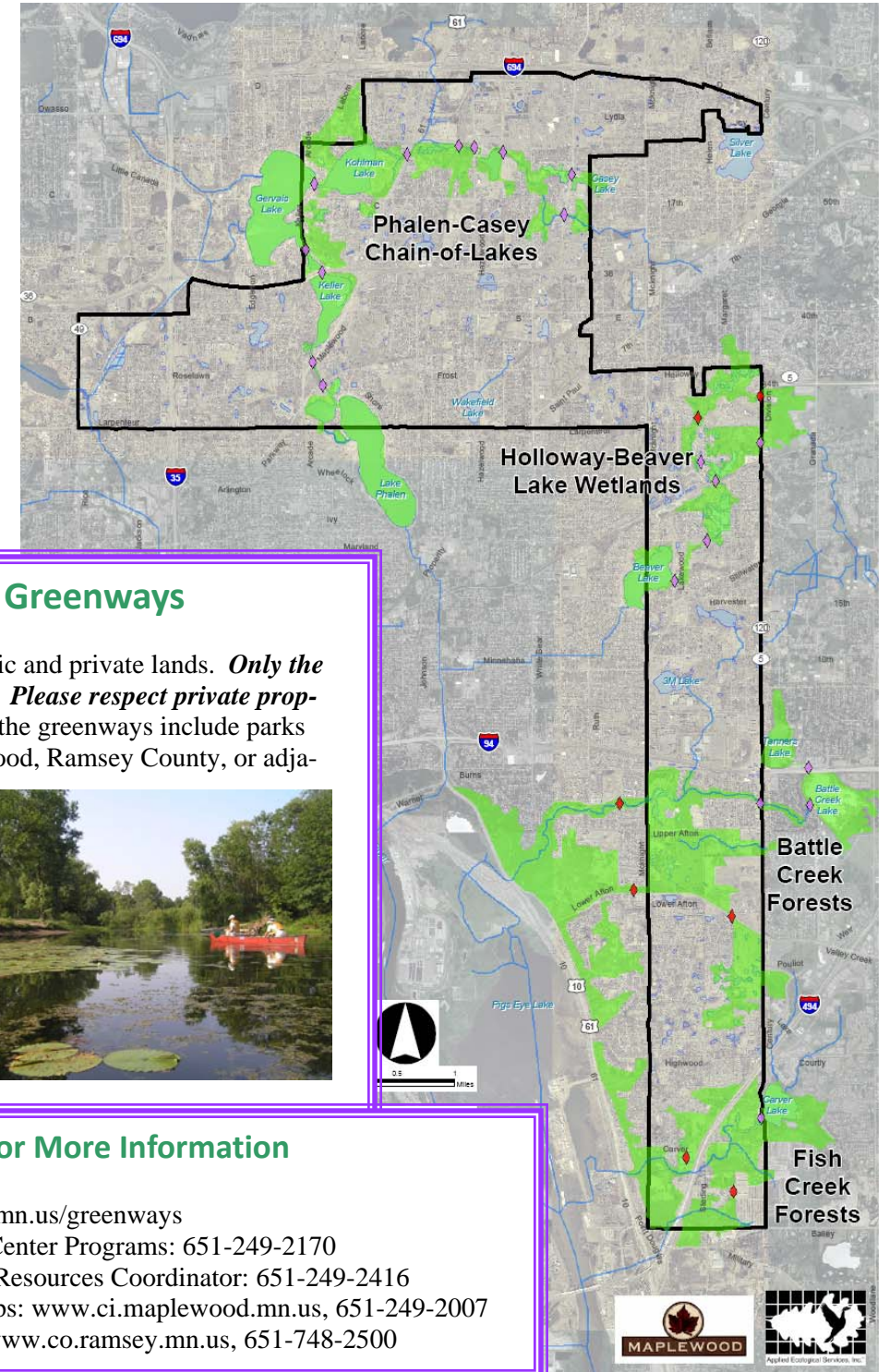
Maplewood’s Natural Area Greenways extend into adjacent cities. And two of the Greenways connect to the Mississippi River bluffs. There are buildings, roads, and houses within the greenway boundaries. “Pinch points” are formed where roads cross the greenway and disrupt the movement of animals. Both high quality and ecologically degraded habitat are included.

Goals for the Greenway

- Protect, connect, and enhance large scale ecosystems and ecosystem services.
- Provide habitat for species that require large natural areas.
- Provide a wide continuous corridor of natural vegetation for animal movement.
- Provide for passive recreation such as hiking and enjoyment of nature.
- Foster stewardship of natural resources on both public and private lands.

Why Are Greenways Important?

- **Habitat.** Greenways contain large areas of wildlife habitat, providing food, water, cover, and nesting for diverse animals.
- **Corridors.** Greenways provide corridors for animals to move between sites with habitat.
- **Sensitive areas.** Greenways help buffer and protect sensitive natural areas and areas with rare species.
- **Migration.** Greenways provide stopovers for birds that migrate through Maplewood, heading north to their breeding grounds.
- **Recreation.** Public lands in the greenways provide opportunities for recreational trails and places to explore nature.
- **Environmental Services.** Greenways provide environmental services. They are part of our green infrastructure—the biological systems that support the city. Trees filter air pollutants and provide shade, helping to reduce the “heat island” effect in cities. Natural vegetation allows rainwater to soak into the ground and helps filter stormwater run-off. This helps clean the water that enters our lakes and streams.
- **Economic value.** Natural areas draw people to a community to work and recreate. Studies show that homes near natural areas have increased property value.
- **Aesthetics.** Greenways add beauty to our communities and provide a visual break from the developed landscape.



Visiting the Greenways

The greenways include both public and private lands. **Only the public lands are open to visitors. Please respect private property boundaries.** Public lands in the greenways include parks and preserves owned by Maplewood, Ramsey County, or adjacent cities.



To plan a visit to the greenway, use city or county park maps. Brochures highlighting each greenway’s ecology and recreational opportunities will be available soon.

For More Information

www.ci.maplewood.mn.us/greenways
 Maplewood Nature Center Programs: 651-249-2170
 Maplewood Natural Resources Coordinator: 651-249-2416
 Maplewood park maps: www.ci.maplewood.mn.us, 651-249-2007
 County park maps: www.co.ramsey.mn.us, 651-748-2500

